

# MY COMMUNITY, OUR EARTH

## MIAMI

# Self-Contained Animal Farming

Project Director: Mr. Diony Martinez  
Team Leader: Juan Cruz

**Problem Statement:** How can local farmers cut costs in an effort to create more affordable, organically grown poultry?

Through their use of livestock grain agriculture, farmers are able to utilize twenty six acres of land in South Florida in order to produce organic fruits, vegetables, and meat destined for local markets. Investigators attempted to identify how certain crops were only grown to feed her collection of turkeys and chickens, and how the animal's diet affects both their value.

“As a result, farmers convert their corn into meat on the farm by feeding it to the livestock, efficiently avoiding the cost of buying grain” (Fellmann, 2011, 225). However, in the place of grain, these particular agriculturalists use almost a quarter of the land to grow dozens of apple banana trees in the area surrounding the livestock. While these crops are not highly valued in the local market, a high demand exists for the organic meat these fruits will help create. Farmers build up chickens and poultry to required weights in order to sell to local meat markets and fetch a high profit. By doing so, owners are able to not only cut down on the costs of refrigerated transportation, but subsequently provide less-expensive meals to feed their poultry.



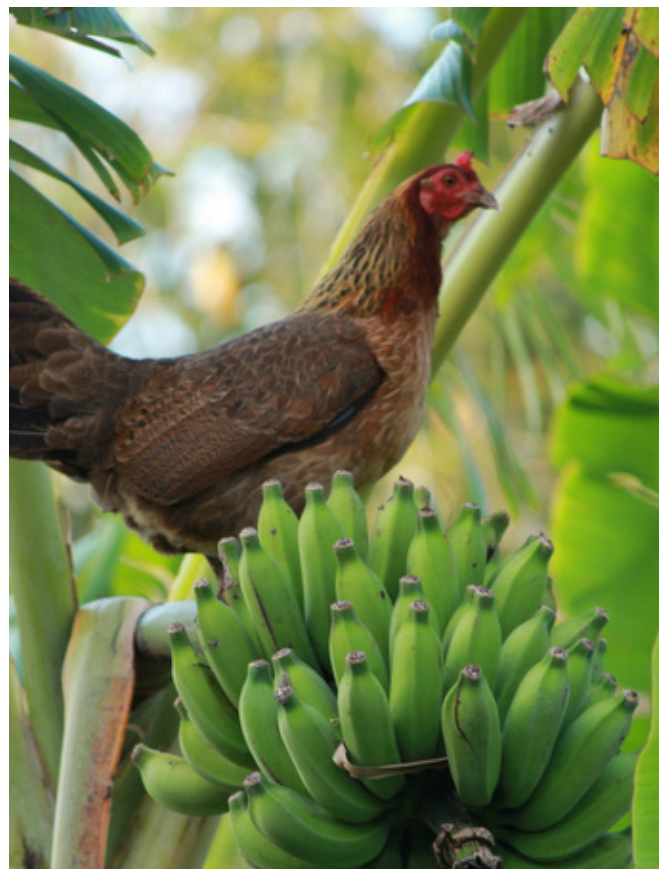
Apple bananas stood out from all of her fruits. Laura says it is not only the chicken's favorite, but she uses the banana peel as fertilizer for her soil.

## Conclusion

Through this systematic process of feeding, the estate “has maximized profit by more than thirty percent” (Cruz, 2013). Her farming methods have not only provided a richer taste for produce, but a cleaner and entirely hormone free livestock. Through utilization of livestock grain farming, a more affordable product is available; helping those whom consume it in one ways than one. The farm is able to increase the value of the livestock because due to the fact that they are free of the hormones or chemicals that negatively alter their natural growth.



Laura Mani has a variety fruits cultivated at her farm, all produced with organic material. 50% of her annual fruit produce is used to feed her chickens.



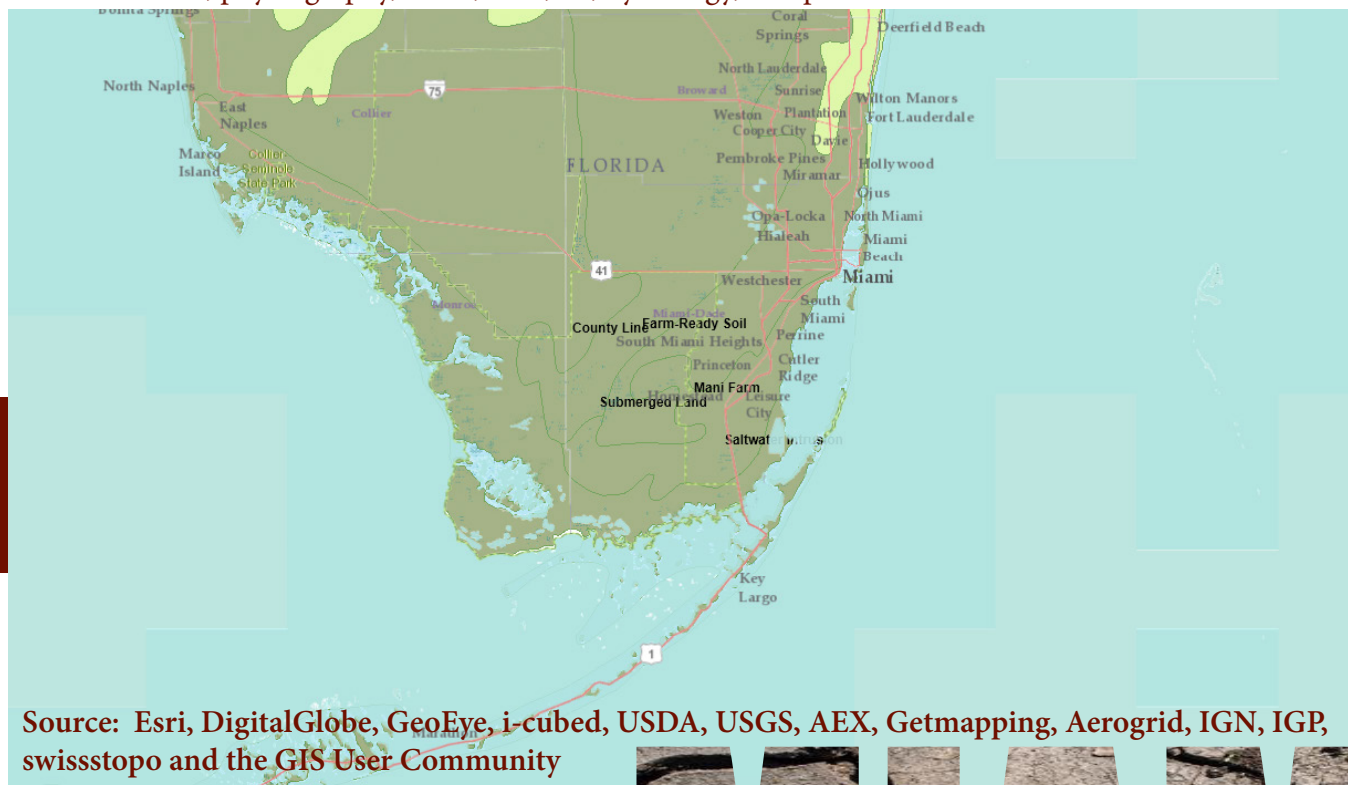


## Resources

Fellmann, J., Bjelland, M., & Getis, J. (2011). Human geography: Landscapes of human activities. New York: McGraw Hill.

Mani, L. (2013, 02 13). Interview by J Cruz. Self-Contained Animal Farming.

Ecological units are mapped based on associations of biotic and environmental factors that directly affect or indirectly express energy, moisture, soil composition and quality, and nutrient gradients. These factors include climate, physiography, water, soils, air, hydrology, and potential natural communities.



Source: Esri, DigitalGlobe, GeoEye, i-cubed, USDA, USGS, AEX, Getmapping, Aerogrid, IGN, IGP, swissstopo and the GIS User Community

