



Methane emission potential across subtropical, temperate, and arctic ecosystems

Sparkle. L. Malone¹, Youmi Oh², Roisin Commane³, Alexandra R. Contosta⁴ and Ruth Varner⁴

¹Yale School of the Environment, Yale University

²Cooperative Institute for Research in Environmental Sciences, University of Colorado, Boulder

³Department of Earth & Environmental Sciences, Lamont-Doherty Earth Observatory, Columbia University

⁴Earth Systems Research Center, Institute for the Study of Earth, Oceans, and Space, University of New Hampshire

Introduction

- In 2021 atmospheric methane concentrations hit another record high (Figure 1).

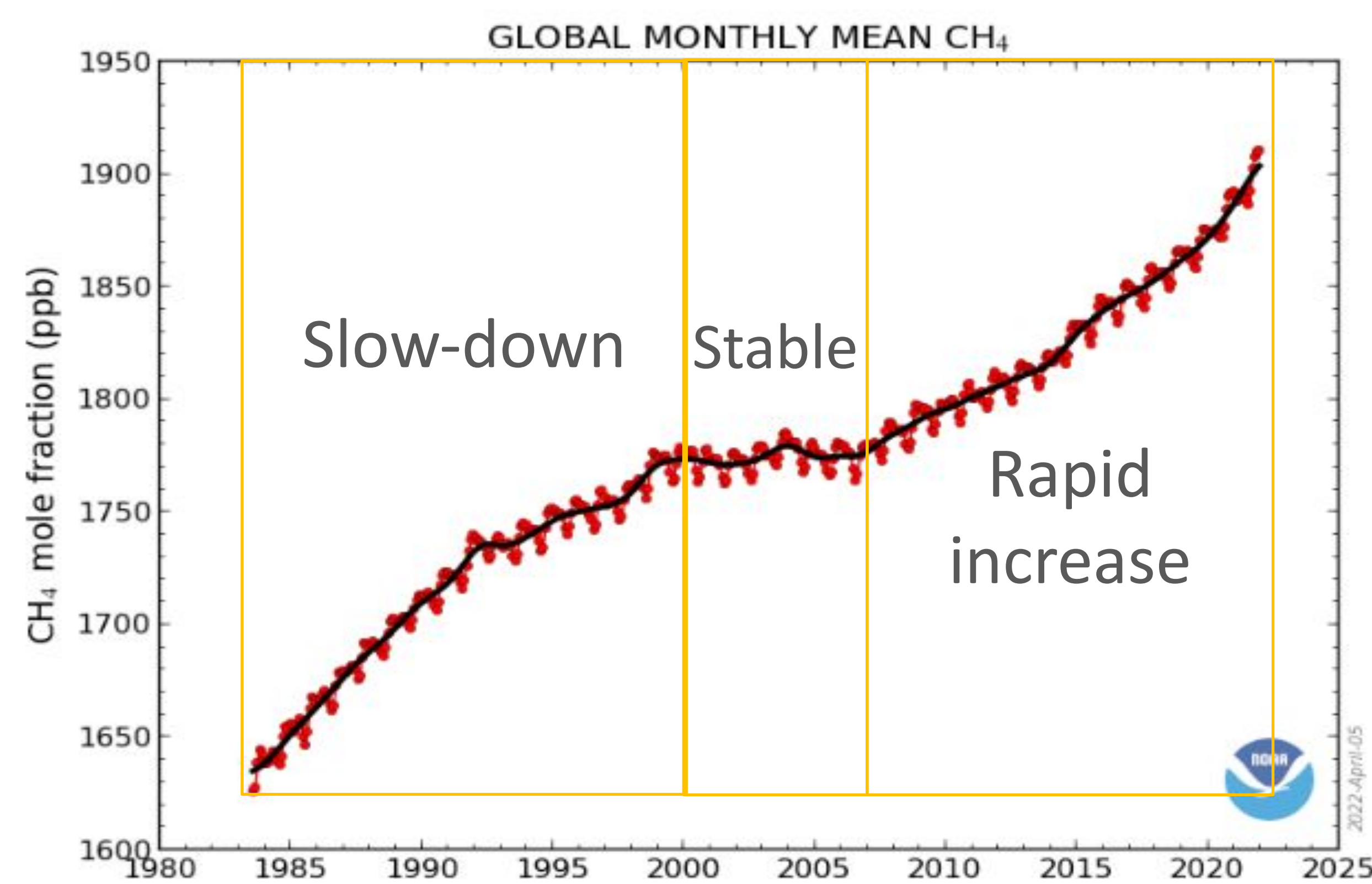
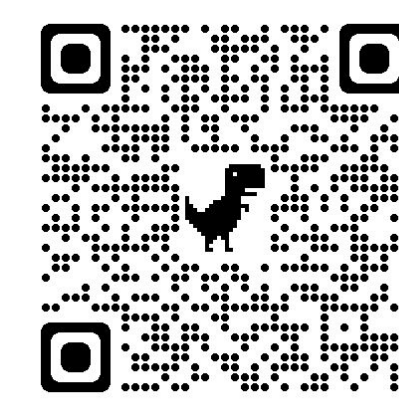


Figure 1. Monthly mean CH₄ mole fraction from 1983 to 2021.



- The large decrease in $\delta^{13}\text{C}-\text{CH}_4$ 2005 - 2021 may indicate that the increase in CH₄ concentrations in the atmosphere (Figure 1) may be from biogenic sources (Figure 2).

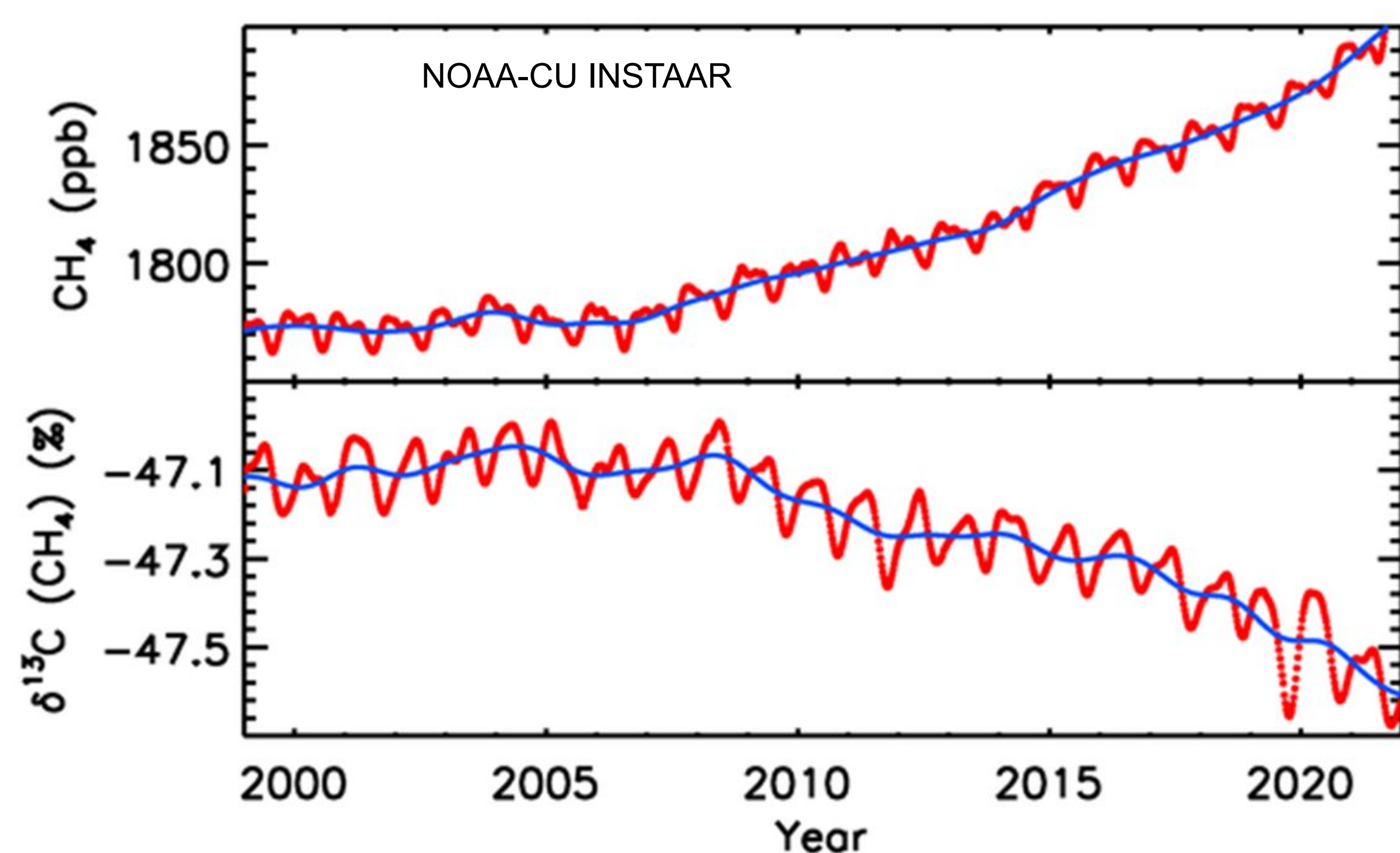


Figure 2. (top) Monthly mean CH₄ mole fraction 1999 to 2021 and (bottom) monthly mean $\delta^{13}\text{C}-\text{CH}_4$.



- While there are a lot of ideas about what is leading to rising atmospheric CH₄ concentrations, we don't know if it is caused by changes in sinks or source of CH₄.
- Since methane mitigation is an important strategy to constrain runaway warming, we need adequate infrastructure to understand biogenic methane.

Gaps in Network Infrastructure

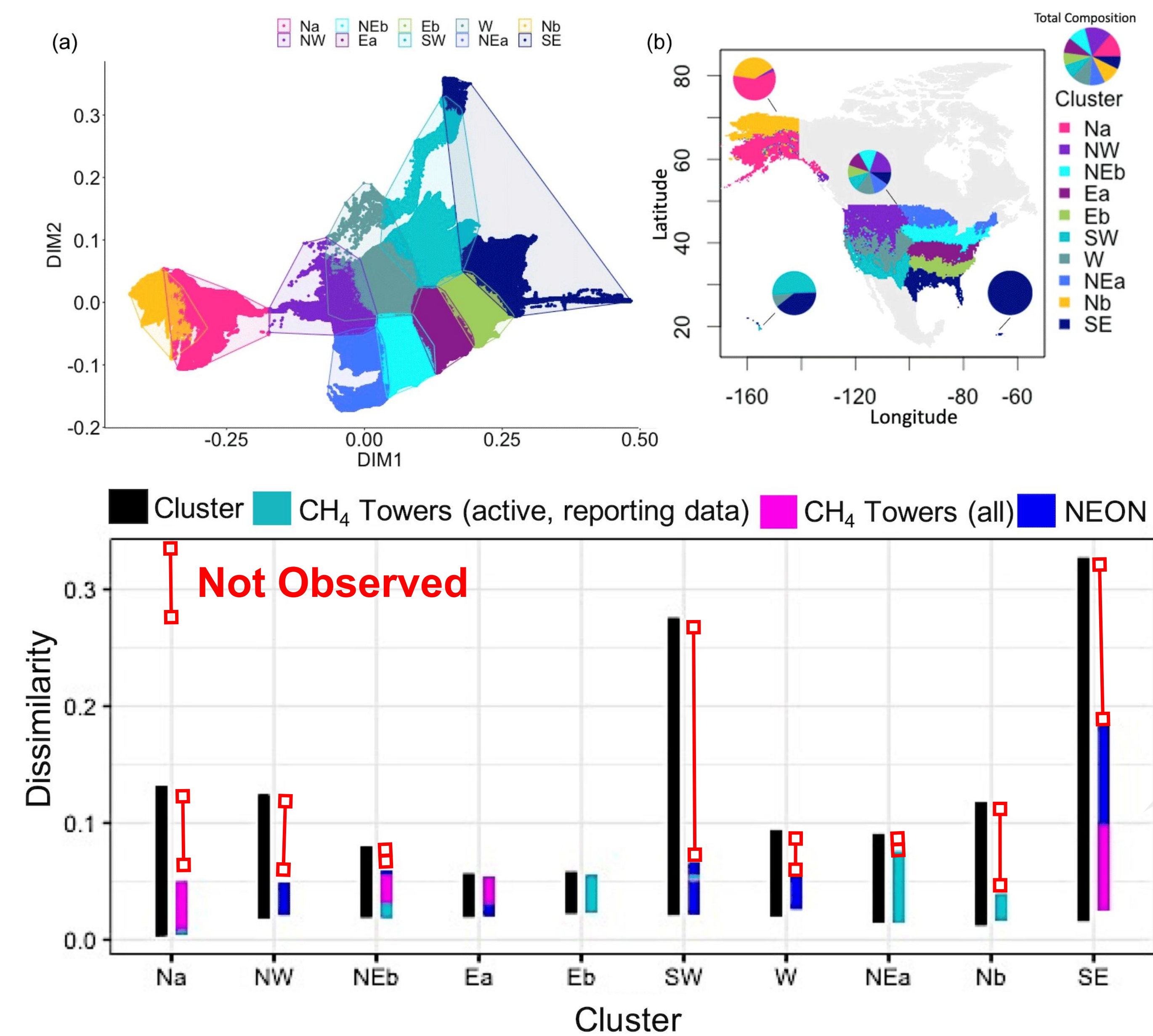
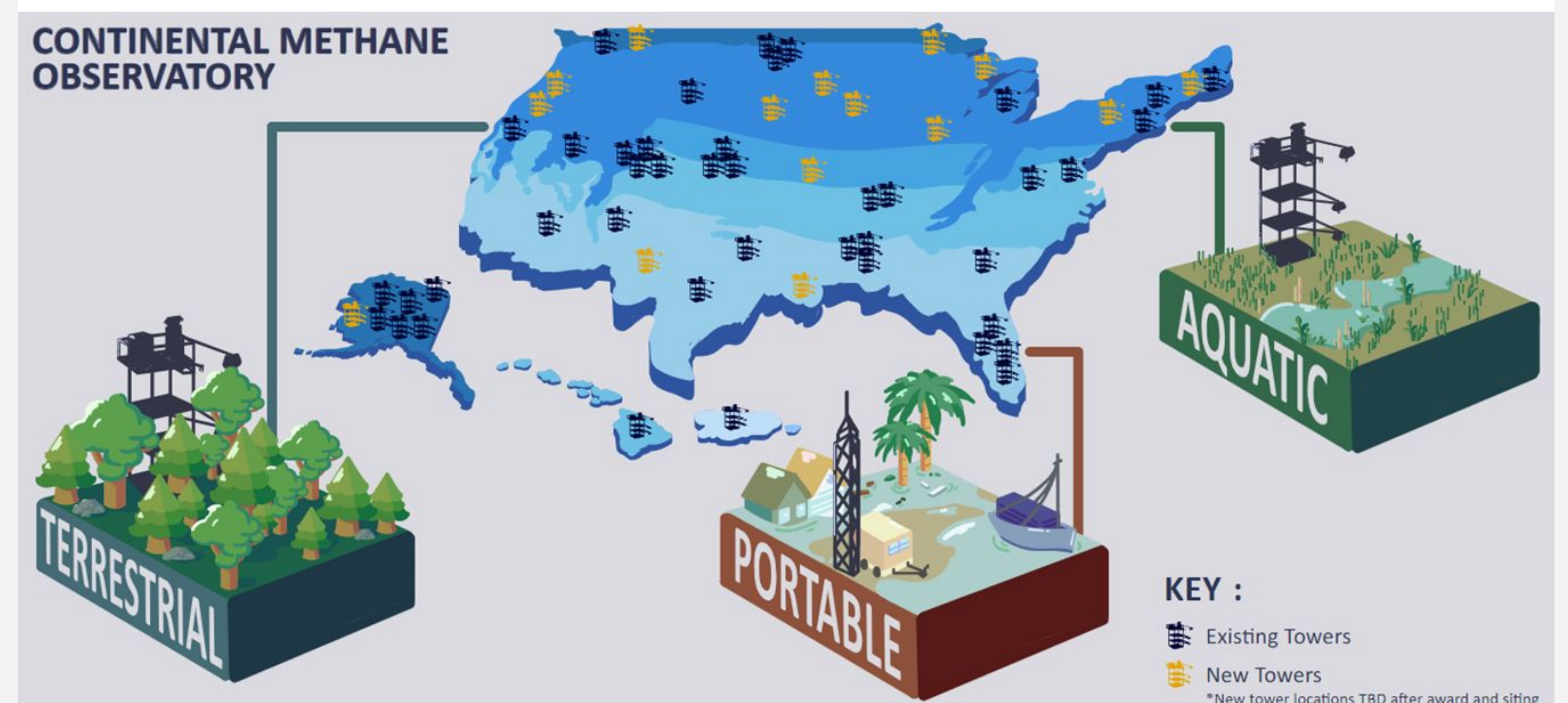


Figure 3. The U.S. was divided into 10 climate clusters. The dissimilarity of an entire cluster (black) is then compared to the dissimilarity of tower locations.

Clusters require additional infrastructure to sample the range of climates observed.



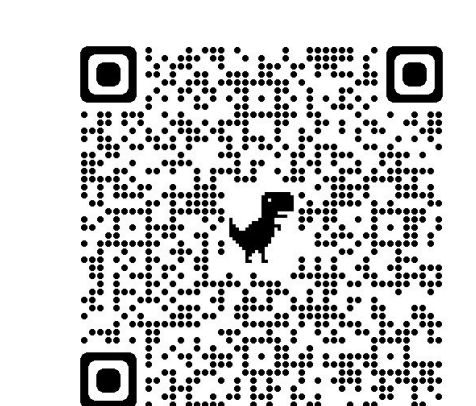
Continental Methane Observatory



NATIONAL SCIENCE FOUNDATION
LTER NETWORK
LONG TERM ECOLOGICAL RESEARCH



Feedback Survey



Mid-scale Infrastructure

